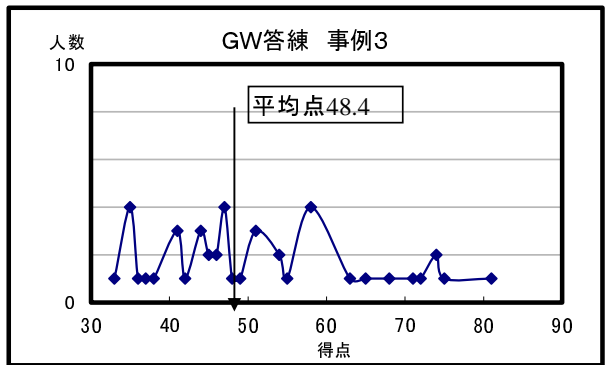
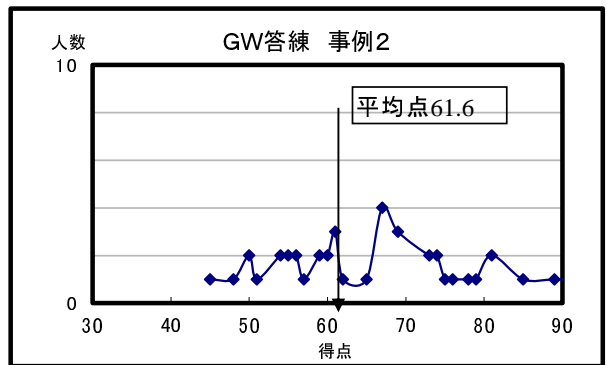
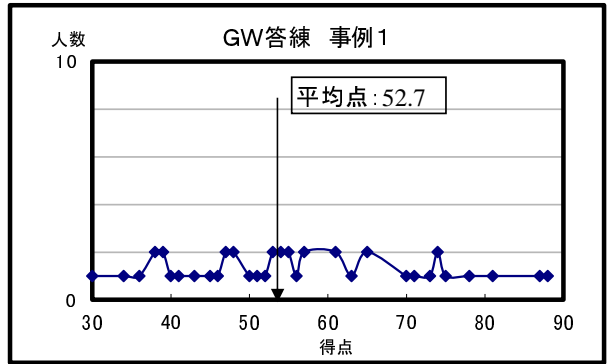


2021年度MMC GW集中 財務答練ゼミ 成績表

※成績表は、GW集中ゼミ講義日翌々日までに提出のあった答案が対象です。

事例1		事例2		事例3	
1 位	88	1 位	93	1 位	81
2 位	87	2 位	89	2 位	75
3 位	81	3 位	85	3 位	74
4 位	78	4 位	81	3 位	74
5 位	75	4 位	81	5 位	72
6 位	74	6 位	79	6 位	71
6 位	74	7 位	78	7 位	68
8 位	73	8 位	76	8 位	65
9 位	71	9 位	75	9 位	63
10 位	70	10 位	74	10 位	58
11 位	65	10 位	74	10 位	58
11 位	65	12 位	73	10 位	58
13 位	63	12 位	73	10 位	58
14 位	61	14 位	69	14 位	55
14 位	61	14 位	69	15 位	54
16 位	57	14 位	69	15 位	54
16 位	57	17 位	67	17 位	51
18 位	56	17 位	67	17 位	51
19 位	55	17 位	67	17 位	51
19 位	55	17 位	67	20 位	49
21 位	54	21 位	65	21 位	48
21 位	54	22 位	62	22 位	47
23 位	53	23 位	61	22 位	47
23 位	53	23 位	61	22 位	47
25 位	52	23 位	61	22 位	47
26 位	51	26 位	60	26 位	46
27 位	50	26 位	60	26 位	46
28 位	48	28 位	59	28 位	45
28 位	48	28 位	59	28 位	45
30 位	47	30 位	57	30 位	44
30 位	47	31 位	56	30 位	44
32 位	46	31 位	56	30 位	44
33 位	45	33 位	55	33 位	42
34 位	43	33 位	55	34 位	41
35 位	41	35 位	54	34 位	41
36 位	40	35 位	54	34 位	41
37 位	39	37 位	51	37 位	38
37 位	39	38 位	50	38 位	37
39 位	38	38 位	50	39 位	36
39 位	38	40 位	48	40 位	35
41 位	36	41 位	45	40 位	35
42 位	34	42 位	43	40 位	35
43 位	30	43 位	41	40 位	35
44 位	26	43 位	41	44 位	33
45 位	24	45 位	38	45 位	32
46 位	19	46 位	37	46 位	29
47 位	14	47 位	36	47 位	27
		48 位	34	48 位	24
				49 位	22
平均点	52.7	平均点	61.6	平均点	48.4



GW集中 財務答練 事例1 合計得点集計

点数	人数	比率	累積	点数	人数	比率	累積
100	0	(0%)	(0%)	49	0	(0%)	(57%)
99	0	(0%)	(0%)	48	2	(4%)	(62%)
98	0	(0%)	(0%)	47	2	(4%)	(66%)
97	0	(0%)	(0%)	46	1	(2%)	(68%)
96	0	(0%)	(0%)	45	1	(2%)	(70%)
95	0	(0%)	(0%)	44	0	(0%)	(70%)
94	0	(0%)	(0%)	43	1	(2%)	(72%)
93	0	(0%)	(0%)	42	0	(0%)	(72%)
92	0	(0%)	(0%)	41	1	(2%)	(74%)
91	0	(0%)	(0%)	40	1	(2%)	(77%)
90	0	(0%)	(0%)	39	2	(4%)	(81%)
89	0	(0%)	(0%)	38	2	(4%)	(85%)
88	1	(2%)	(2%)	37	0	(0%)	(85%)
87	1	(2%)	(4%)	36	1	(2%)	(87%)
86	0	(0%)	(4%)	35	0	(0%)	(87%)
85	0	(0%)	(4%)	34	1	(2%)	(89%)
84	0	(0%)	(4%)	33	0	(0%)	(89%)
83	0	(0%)	(4%)	32	0	(0%)	(89%)
82	0	(0%)	(4%)	31	0	(0%)	(89%)
81	1	(2%)	(6%)	30	1	(2%)	(91%)
80	0	(0%)	(6%)	29	0	(0%)	(91%)
79	0	(0%)	(6%)	28	0	(0%)	(91%)
78	1	(2%)	(9%)	27	0	(0%)	(91%)
77	0	(0%)	(9%)	26	1	(2%)	(94%)
76	0	(0%)	(9%)	25	0	(0%)	(94%)
75	1	(2%)	(11%)	24	1	(2%)	(96%)
74	2	(4%)	(15%)	23	0	(0%)	(96%)
73	1	(2%)	(17%)	22	0	(0%)	(96%)
72	0	(0%)	(17%)	21	0	(0%)	(96%)
71	1	(2%)	(19%)	20	0	(0%)	(96%)
70	1	(2%)	(21%)	19	1	(2%)	(98%)
69	0	(0%)	(21%)	18	0	(0%)	(98%)
68	0	(0%)	(21%)	17	0	(0%)	(98%)
67	0	(0%)	(21%)	16	0	(0%)	(98%)
66	0	(0%)	(21%)	15	0	(0%)	(98%)
65	2	(4%)	(26%)	14	1	(2%)	(100%)
64	0	(0%)	(26%)	13	0	(0%)	(100%)
63	1	(2%)	(28%)	12	0	(0%)	(100%)
62	0	(0%)	(28%)	11	0	(0%)	(100%)
61	2	(4%)	(32%)	10	0	(0%)	(100%)
60	0	(0%)	(32%)	9	0	(0%)	(100%)
59	0	(0%)	(32%)	8	0	(0%)	(100%)
58	0	(0%)	(32%)	7	0	(0%)	(100%)
57	2	(4%)	(36%)	6	0	(0%)	(100%)
56	1	(2%)	(38%)	5	0	(0%)	(100%)
55	2	(4%)	(43%)	4	0	(0%)	(100%)
54	2	(4%)	(47%)	3	0	(0%)	(100%)
53	2	(4%)	(51%)	2	0	(0%)	(100%)
52	1	(2%)	(53%)	1	0	(0%)	(100%)
51	1	(2%)	(55%)	0	0	(0%)	(100%)
50	1	(2%)	(57%)	合計	47	(100%)	

GW集中 財務答練 事例2 合計得点集計

点数	人数	比率	累積	点数	人数	比率	累積
100	0	(0%)	(0%)	49	0	(0%)	(81%)
99	0	(0%)	(0%)	48	1	(2%)	(83%)
98	0	(0%)	(0%)	47	0	(0%)	(83%)
97	0	(0%)	(0%)	46	0	(0%)	(83%)
96	0	(0%)	(0%)	45	1	(2%)	(85%)
95	0	(0%)	(0%)	44	0	(0%)	(85%)
94	0	(0%)	(0%)	43	1	(2%)	(88%)
93	1	(2%)	(2%)	42	0	(0%)	(88%)
92	0	(0%)	(2%)	41	2	(4%)	(92%)
91	0	(0%)	(2%)	40	0	(0%)	(92%)
90	0	(0%)	(2%)	39	0	(0%)	(92%)
89	1	(2%)	(4%)	38	1	(2%)	(94%)
88	0	(0%)	(4%)	37	1	(2%)	(96%)
87	0	(0%)	(4%)	36	1	(2%)	(98%)
86	0	(0%)	(4%)	35	0	(0%)	(98%)
85	1	(2%)	(6%)	34	1	(2%)	(100%)
84	0	(0%)	(6%)	33	0	(0%)	(100%)
83	0	(0%)	(6%)	32	0	(0%)	(100%)
82	0	(0%)	(6%)	31	0	(0%)	(100%)
81	2	(4%)	(10%)	30	0	(0%)	(100%)
80	0	(0%)	(10%)	29	0	(0%)	(100%)
79	1	(2%)	(13%)	28	0	(0%)	(100%)
78	1	(2%)	(15%)	27	0	(0%)	(100%)
77	0	(0%)	(15%)	26	0	(0%)	(100%)
76	1	(2%)	(17%)	25	0	(0%)	(100%)
75	1	(2%)	(19%)	24	0	(0%)	(100%)
74	2	(4%)	(23%)	23	0	(0%)	(100%)
73	2	(4%)	(27%)	22	0	(0%)	(100%)
72	0	(0%)	(27%)	21	0	(0%)	(100%)
71	0	(0%)	(27%)	20	0	(0%)	(100%)
70	0	(0%)	(27%)	19	0	(0%)	(100%)
69	3	(6%)	(33%)	18	0	(0%)	(100%)
68	0	(0%)	(33%)	17	0	(0%)	(100%)
67	4	(8%)	(42%)	16	0	(0%)	(100%)
66	0	(0%)	(42%)	15	0	(0%)	(100%)
65	1	(2%)	(44%)	14	0	(0%)	(100%)
64	0	(0%)	(44%)	13	0	(0%)	(100%)
63	0	(0%)	(44%)	12	0	(0%)	(100%)
62	1	(2%)	(46%)	11	0	(0%)	(100%)
61	3	(6%)	(52%)	10	0	(0%)	(100%)
60	2	(4%)	(56%)	9	0	(0%)	(100%)
59	2	(4%)	(60%)	8	0	(0%)	(100%)
58	0	(0%)	(60%)	7	0	(0%)	(100%)
57	1	(2%)	(63%)	6	0	(0%)	(100%)
56	2	(4%)	(67%)	5	0	(0%)	(100%)
55	2	(4%)	(71%)	4	0	(0%)	(100%)
54	2	(4%)	(75%)	3	0	(0%)	(100%)
53	0	(0%)	(75%)	2	0	(0%)	(100%)
52	0	(0%)	(75%)	1	0	(0%)	(100%)
51	1	(2%)	(77%)	0	0	(0%)	(100%)
50	2	(4%)	(81%)	合計	48	(100%)	

## GW集中 財務答練 事例3 合計得点集計

点数	人数	比率	累積	点数	人数	比率	累積
100	0	(0%)	(0%)	49	1	(2%)	(41%)
99	0	(0%)	(0%)	48	1	(2%)	(43%)
98	0	(0%)	(0%)	47	4	(8%)	(51%)
97	0	(0%)	(0%)	46	2	(4%)	(55%)
96	0	(0%)	(0%)	45	2	(4%)	(59%)
95	0	(0%)	(0%)	44	3	(6%)	(65%)
94	0	(0%)	(0%)	43	0	(0%)	(65%)
93	0	(0%)	(0%)	42	1	(2%)	(67%)
92	0	(0%)	(0%)	41	3	(6%)	(73%)
91	0	(0%)	(0%)	40	0	(0%)	(73%)
90	0	(0%)	(0%)	39	0	(0%)	(73%)
89	0	(0%)	(0%)	38	1	(2%)	(76%)
88	0	(0%)	(0%)	37	1	(2%)	(78%)
87	0	(0%)	(0%)	36	1	(2%)	(80%)
86	0	(0%)	(0%)	35	4	(8%)	(88%)
85	0	(0%)	(0%)	34	0	(0%)	(88%)
84	0	(0%)	(0%)	33	1	(2%)	(90%)
83	0	(0%)	(0%)	32	1	(2%)	(92%)
82	0	(0%)	(0%)	31	0	(0%)	(92%)
81	1	(2%)	(2%)	30	0	(0%)	(92%)
80	0	(0%)	(2%)	29	1	(2%)	(94%)
79	0	(0%)	(2%)	28	0	(0%)	(94%)
78	0	(0%)	(2%)	27	1	(2%)	(96%)
77	0	(0%)	(2%)	26	0	(0%)	(96%)
76	0	(0%)	(2%)	25	0	(0%)	(96%)
75	1	(2%)	(4%)	24	1	(2%)	(98%)
74	2	(4%)	(8%)	23	0	(0%)	(98%)
73	0	(0%)	(8%)	22	1	(2%)	(100%)
72	1	(2%)	(10%)	21	0	(0%)	(100%)
71	1	(2%)	(12%)	20	0	(0%)	(100%)
70	0	(0%)	(12%)	19	0	(0%)	(100%)
69	0	(0%)	(12%)	18	0	(0%)	(100%)
68	1	(2%)	(14%)	17	0	(0%)	(100%)
67	0	(0%)	(14%)	16	0	(0%)	(100%)
66	0	(0%)	(14%)	15	0	(0%)	(100%)
65	1	(2%)	(16%)	14	0	(0%)	(100%)
64	0	(0%)	(16%)	13	0	(0%)	(100%)
63	1	(2%)	(18%)	12	0	(0%)	(100%)
62	0	(0%)	(18%)	11	0	(0%)	(100%)
61	0	(0%)	(18%)	10	0	(0%)	(100%)
60	0	(0%)	(18%)	9	0	(0%)	(100%)
59	0	(0%)	(18%)	8	0	(0%)	(100%)
58	4	(8%)	(27%)	7	0	(0%)	(100%)
57	0	(0%)	(27%)	6	0	(0%)	(100%)
56	0	(0%)	(27%)	5	0	(0%)	(100%)
55	1	(2%)	(29%)	4	0	(0%)	(100%)
54	2	(4%)	(33%)	3	0	(0%)	(100%)
53	0	(0%)	(33%)	2	0	(0%)	(100%)
52	0	(0%)	(33%)	1	0	(0%)	(100%)
51	3	(6%)	(39%)	0	0	(0%)	(100%)
50	0	(0%)	(39%)	合計	49	(100%)	

GW集中 財務答練 事例1 設問別得点集計

点数	第1問(設問1) (配点10点)			第1問(設問2) (配点15点)			第2問(設問1) (配点8点)			第2問(設問2) (配点6点)			第2問(設問3) (配点16点)		
	人数	比率	累積	人数	比率	累積	人数	比率	累積	人数	比率	累積	人数	比率	累積
16													0	(0%)	(0%)
15				0	(0%)	(0%)							0	(0%)	(0%)
14				0	(0%)	(0%)							0	(0%)	(0%)
13				0	(0%)	(0%)							1	(2%)	(2%)
12				7	(15%)	(15%)							4	(9%)	(11%)
11				4	(9%)	(23%)							2	(4%)	(15%)
10	37	(79%)	(79%)	9	(19%)	(43%)							1	(2%)	(17%)
9	6	(13%)	(91%)	6	(13%)	(55%)							0	(0%)	(17%)
8	1	(2%)	(94%)	3	(6%)	(62%)	33	(70%)	(70%)				4	(9%)	(26%)
7	2	(4%)	(98%)	12	(26%)	(87%)	0	(0%)	(70%)				0	(0%)	(26%)
6	1	(2%)	(100%)	5	(11%)	(98%)	1	(2%)	(72%)	29	(62%)	(62%)	9	(19%)	(45%)
5	0	(0%)	(100%)	1	(2%)	(100%)	0	(0%)	(72%)	0	(0%)	(62%)	1	(2%)	(47%)
4	0	(0%)	(100%)	0	(0%)	(100%)	3	(6%)	(79%)	1	(2%)	(64%)	0	(0%)	(47%)
3	0	(0%)	(100%)	0	(0%)	(100%)	0	(0%)	(79%)	0	(0%)	(64%)	8	(17%)	(64%)
2	0	(0%)	(100%)	0	(0%)	(100%)	0	(0%)	(79%)	0	(0%)	(64%)	1	(2%)	(66%)
1	0	(0%)	(100%)	0	(0%)	(100%)	0	(0%)	(79%)	0	(0%)	(64%)	0	(0%)	(66%)
0	0	(0%)	(100%)	0	(0%)	(100%)	10	(21%)	(100%)	17	(36%)	(100%)	16	(34%)	(100%)
合計	47	(100%)		47	(100%)		47	(100%)		47	(100%)		47	(100%)	
平均点	9.6			8.8			6.0			3.8			4.5		

点数	第2問(設問4) (配点10点)			第3問(設問1) (配点10点)			第3問(設問2) (配点10点)			第4問(設問1) (配点6点)			第4問(設問2) (配点9点)		
	人数	比率	累積	人数	比率	累積	人数	比率	累積	人数	比率	累積	人数	比率	累積
10	0	(0%)	(0%)	11	(23%)	(23%)	11	(23%)	(23%)						
9	0	(0%)	(0%)	0	(0%)	(23%)	0	(0%)	(23%)				15	(32%)	(32%)
8	5	(11%)	(11%)	9	(19%)	(43%)	0	(0%)	(23%)				1	(2%)	(34%)
7	0	(0%)	(11%)	0	(0%)	(43%)	0	(0%)	(23%)				3	(6%)	(40%)
6	7	(15%)	(26%)	2	(4%)	(47%)	0	(0%)	(23%)	10	(21%)	(21%)	5	(11%)	(51%)
5	1	(2%)	(28%)	0	(0%)	(47%)	2	(4%)	(28%)	0	(0%)	(21%)	5	(11%)	(62%)
4	4	(9%)	(36%)	2	(4%)	(51%)	0	(0%)	(28%)	21	(45%)	(66%)	3	(6%)	(68%)
3	0	(0%)	(36%)	0	(0%)	(51%)	27	(57%)	(85%)	0	(0%)	(66%)	7	(15%)	(83%)
2	5	(11%)	(47%)	1	(2%)	(53%)	0	(0%)	(85%)	13	(28%)	(94%)	4	(9%)	(91%)
1	0	(0%)	(47%)	0	(0%)	(53%)	0	(0%)	(85%)	0	(0%)	(94%)	0	(0%)	(91%)
0	25	(53%)	(100%)	22	(47%)	(100%)	7	(15%)	(100%)	3	(6%)	(100%)	4	(9%)	(100%)
合計	47	(100%)		47	(100%)		47	(100%)		47	(100%)		47	(100%)	
平均点	2.4			4.3			4.3			3.6			5.5		

GW集中 財務答練 事例2 設問別得点集計

点数	第1問(a)・(b) (配点10点)			第1問(c) (配点15点)			第2問(設問1) (配点15点)			第2問(設問2) (配点15点)			第3問(設問1) (配点15点)		
	人数	比率	累積	人数	比率	累積	人数	比率	累積	人数	比率	累積	人数	比率	累積
15				0	(0%)	(0%)	18	(38%)	(38%)	0	(0%)	(0%)	42	(88%)	(88%)
14				0	(0%)	(0%)	0	(0%)	(38%)	0	(0%)	(0%)	0	(0%)	(88%)
13				0	(0%)	(0%)	7	(15%)	(52%)	0	(0%)	(0%)	0	(0%)	(88%)
12				11	(23%)	(23%)	1	(2%)	(54%)	9	(19%)	(19%)	0	(0%)	(88%)
11				9	(19%)	(42%)	2	(4%)	(58%)	6	(13%)	(31%)	0	(0%)	(88%)
10	44	(92%)	(92%)	10	(21%)	(63%)	4	(8%)	(67%)	5	(10%)	(42%)	1	(2%)	(90%)
9	0	(0%)	(92%)	8	(17%)	(79%)	0	(0%)	(67%)	4	(8%)	(50%)	0	(0%)	(90%)
8	3	(6%)	(98%)	5	(10%)	(90%)	4	(8%)	(75%)	6	(13%)	(63%)	0	(0%)	(90%)
7	1	(2%)	(100%)	4	(8%)	(98%)	5	(10%)	(85%)	12	(25%)	(88%)	0	(0%)	(90%)
6	0	(0%)	(100%)	0	(0%)	(98%)	2	(4%)	(90%)	1	(2%)	(90%)	0	(0%)	(90%)
5	0	(0%)	(100%)	0	(0%)	(98%)	0	(0%)	(90%)	0	(0%)	(90%)	4	(8%)	(98%)
4	0	(0%)	(100%)	0	(0%)	(98%)	2	(4%)	(94%)	0	(0%)	(90%)	0	(0%)	(98%)
3	0	(0%)	(100%)	0	(0%)	(98%)	2	(4%)	(98%)	0	(0%)	(90%)	0	(0%)	(98%)
2	0	(0%)	(100%)	0	(0%)	(98%)	1	(2%)	(100%)	0	(0%)	(90%)	0	(0%)	(98%)
1	0	(0%)	(100%)	0	(0%)	(98%)	0	(0%)	(100%)	0	(0%)	(90%)	0	(0%)	(98%)
0	0	(0%)	(100%)	1	(2%)	(100%)	0	(0%)	(100%)	5	(10%)	(100%)	1	(2%)	(100%)
合計	48	(100%)		48	(100%)		48	(100%)		48	(100%)		48	(100%)	
平均点	9.8			9.8			11.0			8.3			13.8		

点数	第3問(設問2) (配点10点)			第4問(設問1) (配点10点)			第4問(設問2) (配点10点)		
	人数	比率	累積	人数	比率	累積	人数	比率	累積
10	11	(23%)	(23%)	6	(13%)	(13%)	0	(0%)	(0%)
9	0	(0%)	(23%)	0	(0%)	(13%)	1	(2%)	(2%)
8	0	(0%)	(23%)	0	(0%)	(13%)	8	(17%)	(19%)
7	0	(0%)	(23%)	0	(0%)	(13%)	2	(4%)	(23%)
6	4	(8%)	(31%)	0	(0%)	(13%)	2	(4%)	(27%)
5	1	(2%)	(33%)	0	(0%)	(13%)	3	(6%)	(33%)
4	0	(0%)	(33%)	0	(0%)	(13%)	5	(10%)	(44%)
3	0	(0%)	(33%)	0	(0%)	(13%)	2	(4%)	(48%)
2	13	(27%)	(60%)	0	(0%)	(13%)	9	(19%)	(67%)
1	10	(21%)	(81%)	29	(60%)	(73%)	3	(6%)	(73%)
0	9	(19%)	(100%)	13	(27%)	(100%)	13	(27%)	(100%)
合計	48	(100%)		48	(100%)		48	(100%)	
平均点	3.6			1.9			3.4		

GW集中 財務答練 事例3 設問別得点集計

点数	第1問 (配点40点)			第2問(設問1) (配点10点)			第2問(設問2) (配点10点)			第3問(設問1) (配点10点)			第3問(設問2) (配点10点)		
	人数	比率	累積	人数	比率	累積	人数	比率	累積	人数	比率	累積	人数	比率	累積
32	1	(2%)	(2%)												
31	0	(0%)	(2%)												
30	6	(12%)	(14%)												
29	2	(4%)	(18%)												
28	3	(6%)	(24%)												
27	9	(18%)	(43%)												
26	0	(0%)	(43%)												
25	14	(29%)	(71%)												
24	2	(4%)	(76%)												
23	7	(14%)	(90%)												
22	0	(0%)	(90%)												
21	2	(4%)	(94%)												
20	2	(4%)	(98%)												
19	0	(0%)	(98%)												
18	0	(0%)	(98%)												
17	0	(0%)	(98%)												
16	1	(2%)	(100%)												
15	0	(0%)	(100%)												
14	0	(0%)	(100%)												
13	0	(0%)	(100%)												
12	0	(0%)	(100%)												
11	0	(0%)	(100%)												
10	0	(0%)	(100%)	8	(16%)	(16%)	0	(0%)	(0%)	28	(57%)	(57%)	0	(0%)	(0%)
9	0	(0%)	(100%)	0	(0%)	(16%)	0	(0%)	(0%)	0	(0%)	(57%)	0	(0%)	(0%)
8	0	(0%)	(100%)	0	(0%)	(16%)	0	(0%)	(0%)	1	(2%)	(59%)	2	(4%)	(4%)
7	0	(0%)	(100%)	0	(0%)	(16%)	0	(0%)	(0%)	0	(0%)	(59%)	10	(20%)	(24%)
6	0	(0%)	(100%)	0	(0%)	(16%)	4	(8%)	(8%)	0	(0%)	(59%)	11	(22%)	(47%)
5	0	(0%)	(100%)	0	(0%)	(16%)	19	(39%)	(47%)	0	(0%)	(59%)	7	(14%)	(61%)
4	0	(0%)	(100%)	0	(0%)	(16%)	0	(0%)	(47%)	1	(2%)	(61%)	6	(12%)	(73%)
3	0	(0%)	(100%)	0	(0%)	(16%)	1	(2%)	(49%)	0	(0%)	(61%)	3	(6%)	(80%)
2	0	(0%)	(100%)	11	(22%)	(39%)	0	(0%)	(49%)	2	(4%)	(65%)	0	(0%)	(80%)
1	0	(0%)	(100%)	17	(35%)	(73%)	0	(0%)	(49%)	0	(0%)	(65%)	0	(0%)	(80%)
0	0	(0%)	(100%)	13	(27%)	(100%)	25	(51%)	(100%)	17	(35%)	(100%)	10	(20%)	(100%)
合計	49	(100%)		49	(100%)		49	(100%)		49	(100%)		49	(100%)	
平均点	25.6			2.4			2.5			6.0			4.5		

点数	第4問(設問1) (配点10点)			第4問(設問2)(a)・(b) (配点5点)			第4問(設問2)(c) (配点5点)		
	人数	比率	累積	人数	比率	累積	人数	比率	累積
10	0	(0%)	(0%)	0	(0%)	(0%)	0	(0%)	(0%)
9	3	(6%)	(6%)	0	(0%)	(0%)	0	(0%)	(0%)
8	3	(6%)	(12%)	0	(0%)	(0%)	0	(0%)	(0%)
7	5	(10%)	(22%)	0	(0%)	(0%)	0	(0%)	(0%)
6	4	(8%)	(31%)	0	(0%)	(0%)	0	(0%)	(0%)
5	2	(4%)	(35%)	13	(27%)	(27%)	0	(0%)	(0%)
4	3	(6%)	(41%)	0	(0%)	(27%)	14	(29%)	(29%)
3	1	(2%)	(43%)	0	(0%)	(27%)	14	(29%)	(57%)
2	8	(16%)	(59%)	7	(14%)	(41%)	4	(8%)	(65%)
1	4	(8%)	(67%)	20	(41%)	(82%)	5	(10%)	(76%)
0	16	(33%)	(100%)	9	(18%)	(100%)	12	(24%)	(100%)
合計	49	(100%)		49	(100%)		49	(100%)	
平均点	3.2			2.0			2.3		